

ASSEMBLY INSTRUCTION

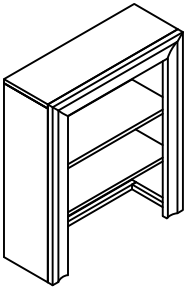
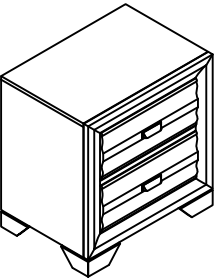
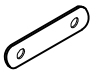
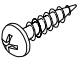
DESCRIPTION : PIER

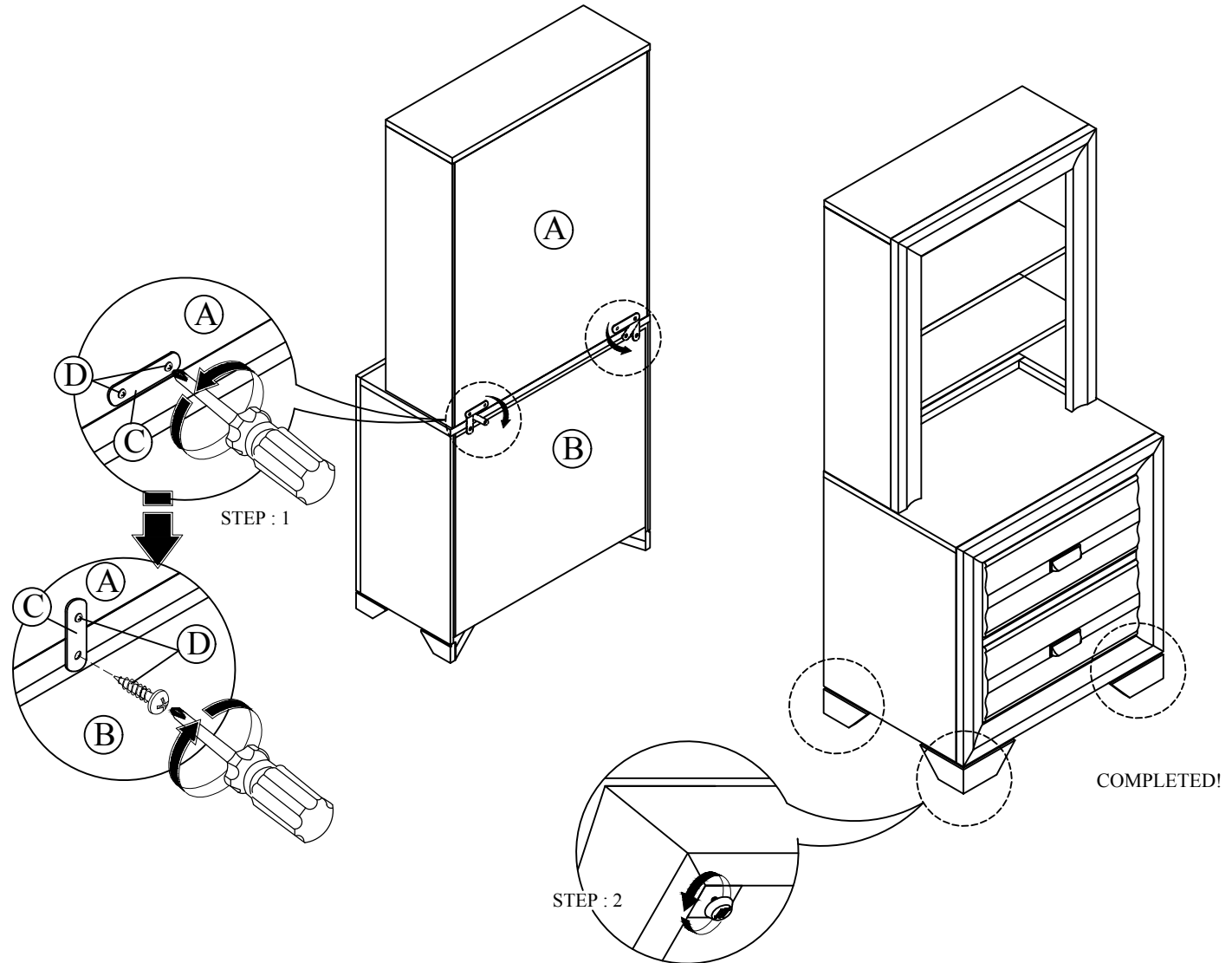
MODEL : C5236A-091 /
C5236G-091 /
C5236W-091

REVISION : A

STEP 1 : PLACE PIER (A) ON TOP OF NIGHTSTAND (B). THEN DETACH ONE OF THE SCREW (D) ATTACHED AT I BRACKET (C) AS SHOWN. ROTATE THE I BRACKET (C) 90° DOWNWARD AND THEN TIGHTEN THE SCREW (D) USING PHILLIPS SCREWDRIVER (NOT PROVIDED).

STEP 2 : ADJUST THE ADJUSTER LOCATED AT BOTTOM OF NIGHTSTAND (B) ACCORDING TO GROUND LEVEL.

NO	PARTS & HARDWARE	QTY.
A	PIER 	1PC
B	NIGHTSTAND 	1PC
C	I BRACKET (ATTACHED TO THE PIER) 	2PCS
D	PH SCREW M4 x 16mm (ATTACH TO THE PIER) 	4PCS



**NOTE : MUST TIGHTEN SCREWS PERIODCALLY WITH USE SCREW WILL BECOME LOOSE.
CHECK TIGHTNESS OF ALL SCREW EVERY 6-8 WEEKS.**